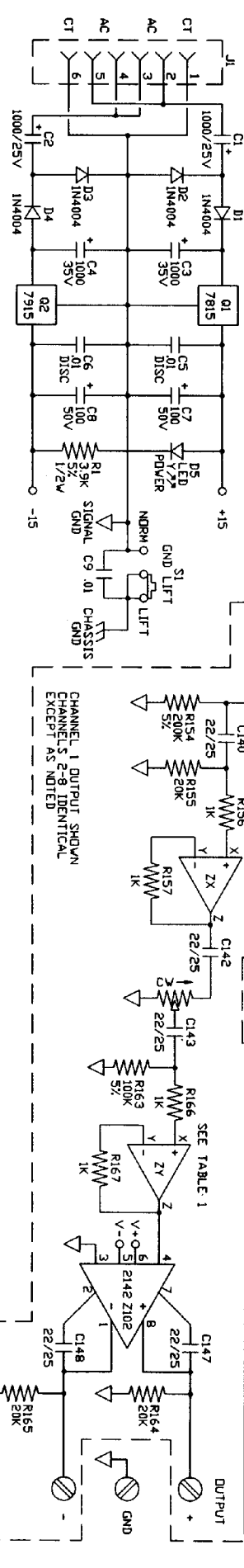


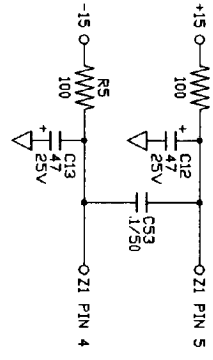
POWER SUPPLY



NOTES (UNLESS OTHERWISE SPECIFIED)

1. ALL RES 1/4W, 1% METAL FILM, 5% CARBON FILM.
2. POWER SUPPLY CONNECTIONS: POS. SUP. NEG. SUP.
3. ALL SVS SHOWN IN THEIR 'OUT' OR 'OFF' POSITION.
4. IC'S: 4074 = Z3, Z4, Z6, Z7; 2015 = Z1; 2142 = Z102; 5532 = Z5.
5. COMPONENT DESIGNATION SCHEME:
 - DESIGNATOR
 - COMPONENT TYPE
 - RESISTOR VALUE
 - CAPACITOR VALUE
 - DIODE
 - IC
 - LED
 - INDICATOR
 - RELAY
 - TRANSFORMER
 - CONNECTOR
 - OTHER

EXAMPLE: R565-RESISTOR CHANNEL 5 NUMBER 65 COMPONENTS COMMON TO ALL CHANNELS NUMBERED 1-99



DECOUPLING

TABLE 1

| CHANNEL | ZX | ZY | PIN X | PIN Y | PIN Z |
|---------|----|----|-------|-------|-------|
| 1 | Z3 | Z6 | 3 | 2 | 1 |
| 2 | Z3 | Z6 | 12 | 13 | 14 |
| 3 | Z3 | Z6 | 5 | 6 | 7 |
| 4 | Z3 | Z6 | 10 | 9 | 8 |
| 5 | Z4 | Z7 | 3 | 2 | 1 |
| 6 | Z4 | Z7 | 12 | 13 | 14 |
| 7 | Z4 | Z7 | 5 | 6 | 7 |
| 8 | Z4 | Z7 | 10 | 9 | 8 |

