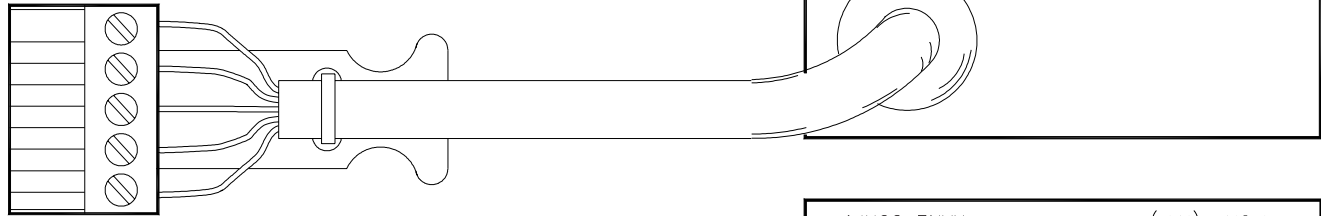


### DIGITAL SERIAL CONVERTER



### General Description

The DSC 1 provides a bridge to connect a PC's RS-232 port and the RIP (Remote Interface Port) used in the SRM 66. Coupled with the included SRM Exchange™ software, the DSC 1 allows an exchange of settings between an SRM 66 and the PC. Once the settings are obtained by the PC they can be manipulated, stored in a file, printed for future reference or sent to another SRM 66.

The compact chassis measures only 2.8" x 2.4" x 1.4" (7.1 cm x 6.1cm x 3.6 cm), with an attached 12" (30 cm) cable for connecting to the SRM 66 RIP.

### System Requirements

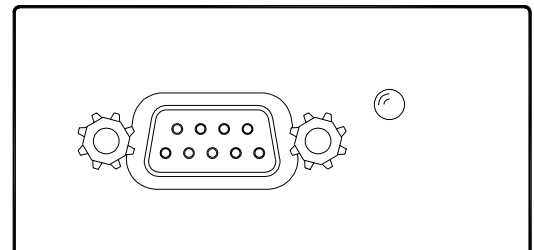
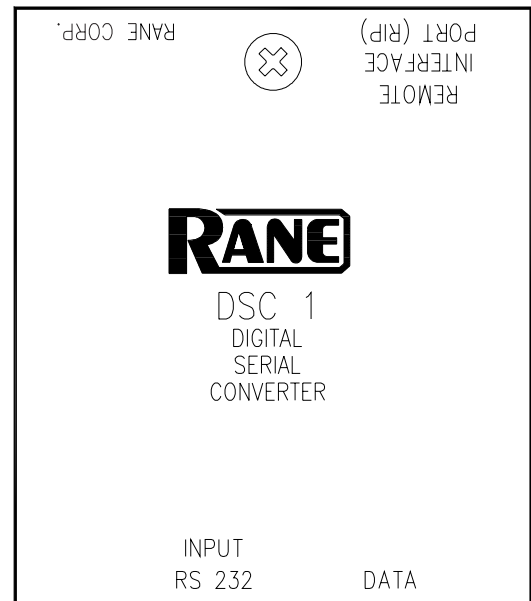
- SRM Exchange works under Microsoft Windows 95, 98, or NT®, on a PC or laptop with an unused serial port.
- The DSC 1 needs a fully wired DB9 cable less than 50' long, connecting from the serial port of a computer to the DSC 1 Input RS-232 communications port. No other interface boxes are required; just a cable and the computer.
- SRM Exchange can be fully demonstrated and used without an actual SRM 66 or DSC 1 attached.
- A SRM Exchange 3½" floppy comes with each DSC 1. Installation is simple and follows standard Windows procedure. The latest version is downloadable from Rane's web site, [www.rane.com](http://www.rane.com).

### DSC 1 Connection

The DSC 1 has two connections, one to the controlling computer's RS-232 port and the other to the SRM 66's RIP. The RS-232 port is connected via the female DB9 jack on the DSC 1 with a standard DB9-DB9 or DB25-DB9 cable (not included). *The cable must not be a null-modem type.*

The DSC 1 connects to the SRM 66's RIP with the hard-wired RIP cable. *No other devices can be connected to the SRM 66's RIP while the DSC 1 is connected.*

The DSC 1 requires no external power source because it derives its power from the RIP.



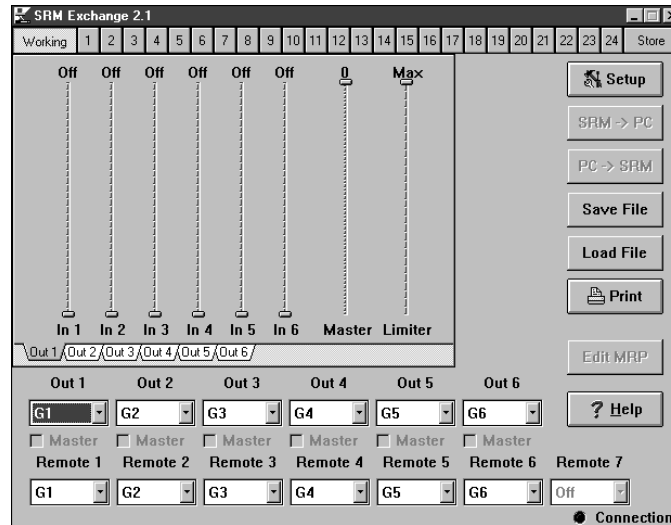
### Install SRM Exchange Software

If you have the SRM Exchange 3.5" floppy disk, insert it in your drive. In Windows, use Add/Remove Programs in the Control Panel to install.

If you downloaded SRM Exchange from the web, decompress the file first. Create a new directory folder named SRM\_INST, and move the SRM Exchange files to this new directory. Now run this file, and all the separate files will decompress. Locate INSTALL.EXE, click OK.

### RS-232 Port Configuration

When the software is executed for the first time, a dialog is presented for selecting the communication port on the PC. This setting can be altered at any time by pressing the Setup button on the software screen.



### SRM 66 RIP Port Configuration

To communicate properly with the PC software, the SRM 66's RIP must be set to *DSC* mode. This is accomplished by setting the RIP parameter on the Memory page of the SRM 66. This must be set back to *SR 1* mode when SR 1 remotes are connected to ensure proper communication.

### Verifying Communications

Once the SRM 66 is successfully linked to the PC, the Connection indicator on the software panel turns *green*. If the indicator is *yellow*, check the SRM 66 Memory page to verify the RIP is set to *DSC*. A *red* indicator shows no communication has been established.

## Basic Software Operation

### Software Model

The SRM Exchange software contains a virtual unit. Changes can be made to this unit without affecting the connected unit. Selecting a Memory button allows editing of that Memory. To copy the settings to another Memory, press Store followed by the destination Memory button.

### Unit Memory Transfers

Pressing the SRM -> PC button brings up a selection dialog for choosing which memories to transfer to the PC from the SRM 66.

Pressing the PC -> SRM button also brings up the memory selection dialog. By selectively transferring Memories, some unit Memories can be updated while others remain undisturbed.

### File Operations

Settings in the PC's virtual unit can be saved and recalled from files with the Save File and Load File buttons. Pressing these buttons brings up a standard Windows file dialog for loading or saving files.

### Printer Settings

Hardcopy versions of the settings can be obtained by pressing the Print button. The PC's virtual / current settings are printed using one page per Memory. Although there is no Memory selection dialog to selectively print Memories, such filtering can be accomplished by choosing only certain pages with the Print Dialog's Pages option. Page 1 is the working Memory with pages 2 through 13 corresponding to Memories 1 through 12.

### Edit MRP

The Edit MRP button opens a dialog allowing custom mapping of the MRP (Memory Recall Port) closures to the 24 Memories on newer versions of the SRM 66 (beginning with SRM 66 firmware rev 2.0). [Master Group functionality is added to firmware rev 2.1.]

Each possible MRP pattern is shown as a decimal number and binary code where 1 represents a switch closure on the numbered contact. To its right is a drop-down menu for each input pattern, where you select the Memory to be recalled.

You can customize Memory recall values, save them to a MRP file and load them into future units. After exiting this dialog with the OK button, the MRP will be updated. See RaneNote 142 for more information on this and other advanced application of the SRM 66.

*Windows is a registered trademark of Microsoft.*